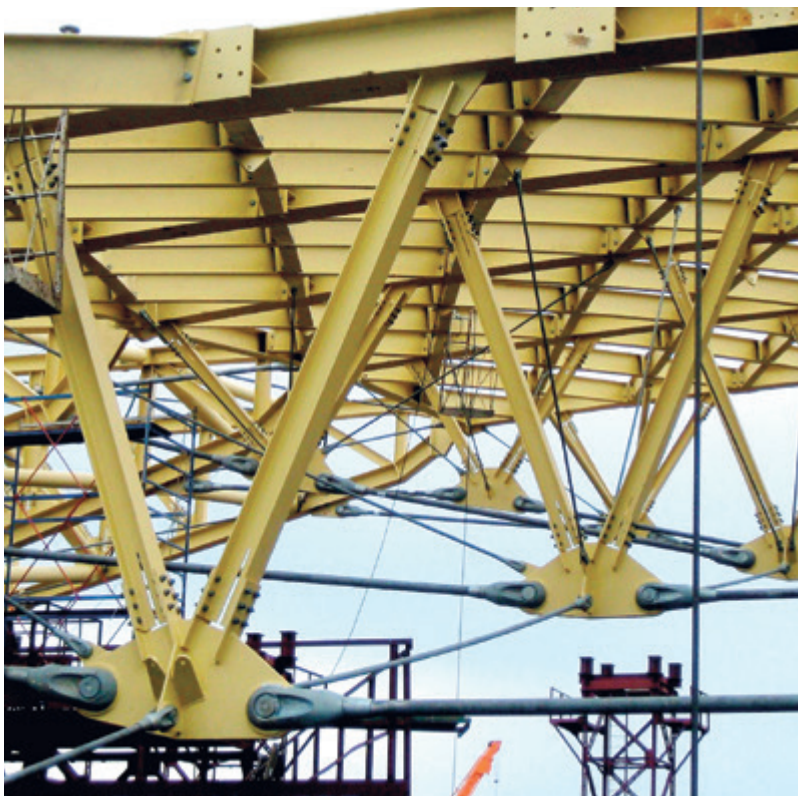


PAST PROJECTS



ASD0540-S tie bars were specified for the new stand at Wolverhampton Football Club in the UK as the only system available to support the high loads and be capable of in-situ stressing.

GENERAL INFORMATION



Sheremetyevo airport under construction



ASD0540-S tie bars are used to support the entrance roof to terminal 3 of Sheremetyevo airport in Moscow.

PAST PROJECTS



ASD0540-S tie bars M76 to M160 were used as the tension elements in the trusses to form part of this unique and structurally demanding London office building at Cannon Place.



Tandem ASD0540-S bars were used to brace the new 52 floor headquarters for the New York Times newspaper.

GENERAL INFORMATION



ASD0540-S M90 tie bars are used as hangers on this East London Line railway bridge in Shoreditch. As well as undergoing rigorous QA the system was also fatigue tested to 2m cycles.



ASD0540-S M56 tie bars were used to form the tension elements for this bowstring truss Kåkenhus footbridge in Norrköping, Sweden.